



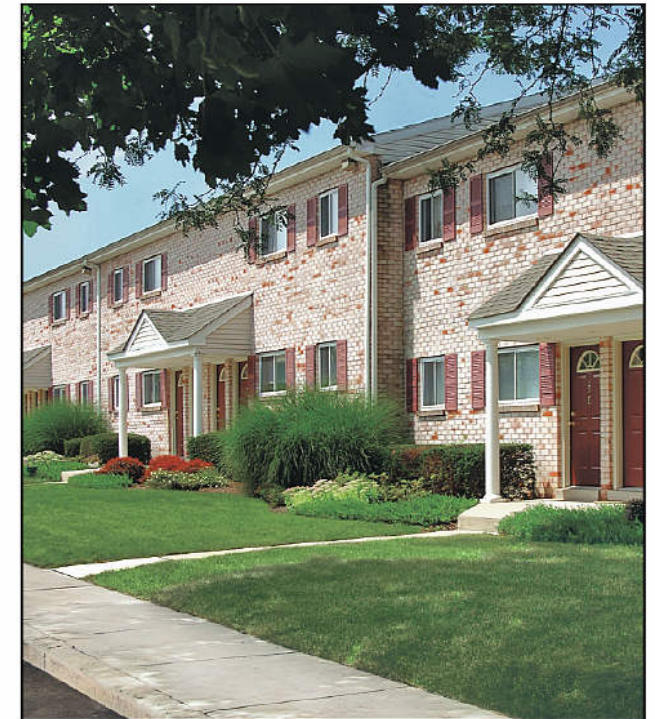
*Thank you for your interest
In our communities.*

**We would love to welcome you home to
one of our fine GPX communities.
Call or stop by today and let us help
you select your new home...**

A GPX Community
422 Main Street
Harleysville, PA 19438
215.256.8252



A GPX Community



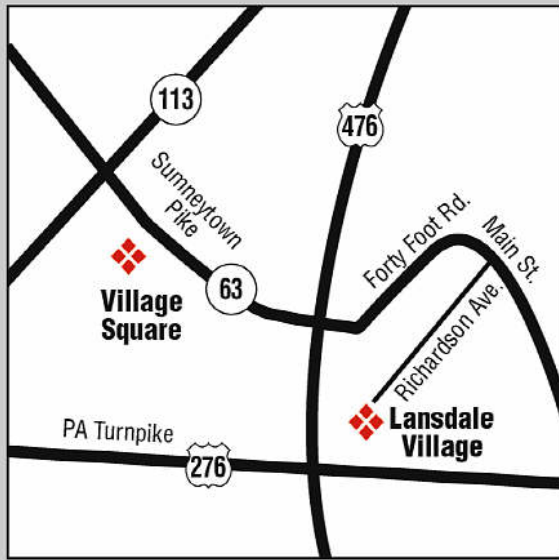
VILLAGE SQUARE

422 Main Street

Harleysville, PA 19438

215.256.8252

www.gpxrealtypartners.com



Please ask about our other local communities

**Lansdale Village
Lansdale, PA**

**A GPX Community
The Right Choice...**

Office Hours:

Monday - Friday 9:00 - 5:00

Saturday 10:00 - 4:00

villagesquare@gpxrealty.com

Other Times By Appointment

Community Features:

- Private Entrances
- Plenty of Closet Space
- Fully Equipped Modern Kitchens
- Select Homes with Washer & Dryer
- Onsite Laundry Center with Smart Card
- Central Air Conditioning
- High Speed Internet Access
- Sparkling Outdoor Pool
- Fitness Center
- Onsite Professional Management
- 24 Hour Emergency Maintenance
- Pets Welcome (some restrictions apply)
- Award Winning School Districts
- Plenty of Onsite Parking
- Pre-Wired for Telephone and Cable
- Location, Location, Location

Amenities Vary Among Communities

Security Deposit \$ _____

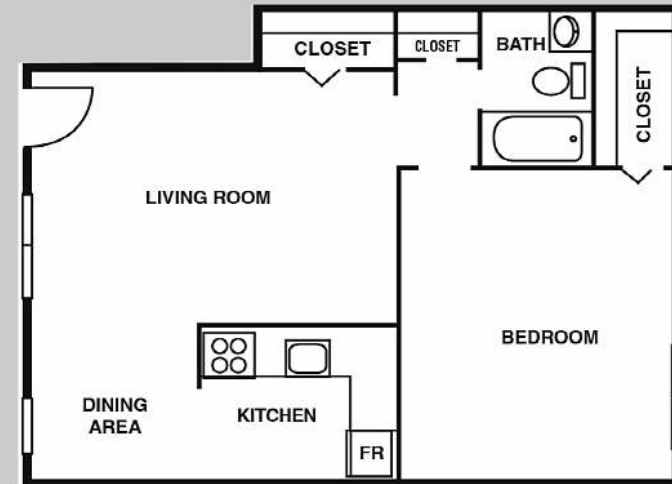
Application Fee \$ _____

Pet Fee \$ _____

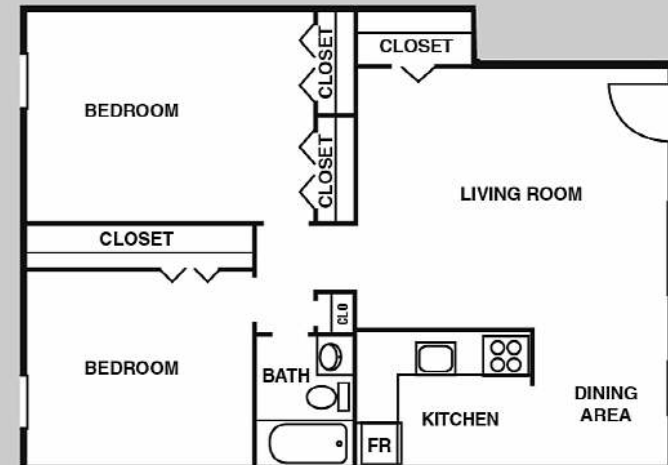
215.256.8252

villagesquare@gpxrealty.com

www.gpxrealtypartners.com



**1 Bedroom 1 Bath
From \$ _____**



**2 Bedroom 1 Bath
From \$ _____**

